

# AMTR

Swing or  
telescopic lip  
dock leveller

Top level

Attention to detail

Security



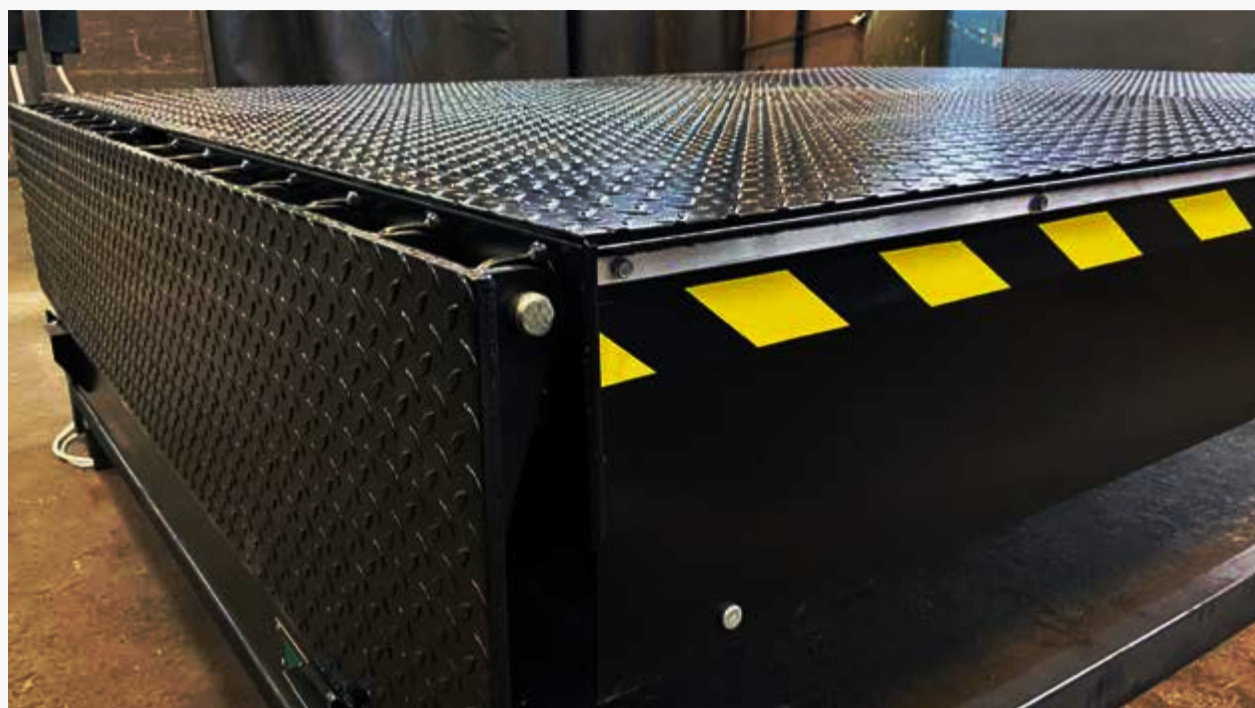
# AMTRK-PRO

## Swing lip dock leveller

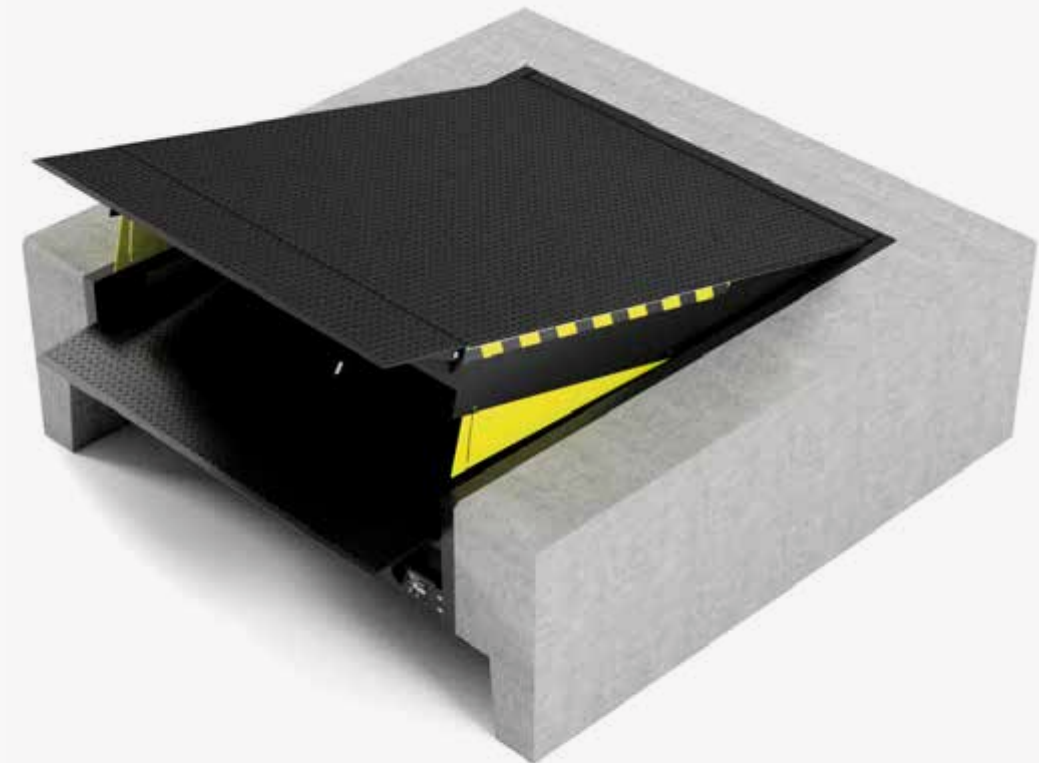
### Intended use

The swing lip dock leveller is designed for picking up pallets with a forklift to load or unload trucks. The leveller is equipped with a stable hinged plate that ensures quick and safe loading. The leveller has the CE mark.

Its platform is made of 6/8 mm thick ribbed sheet metal. It is integrated with the service support and connected to the back of the leveller frame with hinges. Fully secure use is ensured by the anti-slip surface, foot protection along the entire length of the platform and the full lifting range of the leveller. Different methods of placing bridges in the foundation are possible.



### Standard leveller with a dock



### Standard technical parameters\*

Application Nominal	Loading systems
Lengths Nominal	2000, 2500, 3000, 3500, 4000 mm
Widths Structure	2000, 2250 mm
Heights	610 mm
Nominal lip lengths Sheet metal	400, 500 mm
Sheet metal thickness	(depending on the load capacity)
Nominal load capacity	6-12 tonnes (60-120 kN)
Working ranges above the level	0 to 430 mm
Working ranges below the level	0 to -260 mm
Standard colours:	RAL 9005 RAL 7042 RAL 5010 (two-component resin-based paint)

\*Can be adapted according to the customer's requirements



## Types of lips

The AMTRK-PRO dock leveller lip is made of high-quality 12 mm thick tread plate and has a reliable hinge system that works even when heavily soiled. In addition, the lip has a 40 mm chamfer which prevents damage to the wheels of loading devices.

### Straight lip

This standard version is designed to fit most types of loading with vehicles of the most common sizes. The symmetrically cut plate facilitates loading and reduces the risk of damage to the docked vehicle.

Characteristic features:

- lip made of 12 mm sheet metal,
- anti-slip properties,
- better traction of the forklift,
- ergonomic and safe loading.



### Bevelled lip

The symmetrically cut lip facilitates loading and reduces the risk of damage to the docked vehicle.



### Divided lip

This solution consists of one main part and two outermost segments with a maximum width of 250 mm.



## Control

- the drive system of the leveller is a hydraulic cylinder,
- the lip is lifted by a separate cylinder, powered separately by a hydraulic unit,
- closed hydraulic system (maximum pressure 22 bar),
- smooth adjustment to the vehicle height during loading,
- single-button control,
- protection in the event of a power failure or the use of an emergency switch, the leveller is protected against fall – it will stop and maintain the position it was in at the moment,
- the leveller control system can be coupled with the gate control system.

Tank capacity	6 dm <sup>3</sup>
Working pressure	140 bar
Motor power	1,1 kW
Supply voltage	230/400 VAC
Control voltage	24 V DC
Protection type	IP54
Operating medium	TELLUS T-15 or RANDO HDZ-15 mineral oil

## AMTRK-PRO control



STANDARD



AUTOMATIC



COUPLED WITH THE GATE

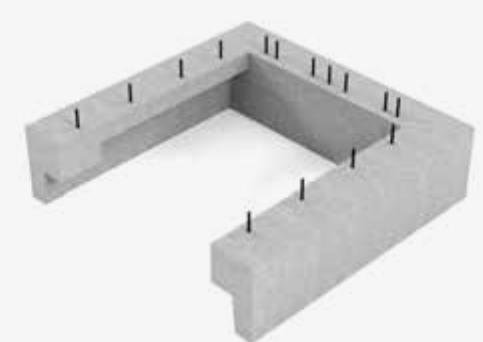
## Dock pan

The main function of the pan is to connect the leveller with the dock.  
The pan is directly filled with concrete.

### Dock standard



### Dock for the frame-formwork



## Standard equipment

- electrical installation,
- hydraulic installation,
- control box,
- straight swing lip,
- platform painted RAL 9005,
- CE declaration of conformity.

## Optional equipment

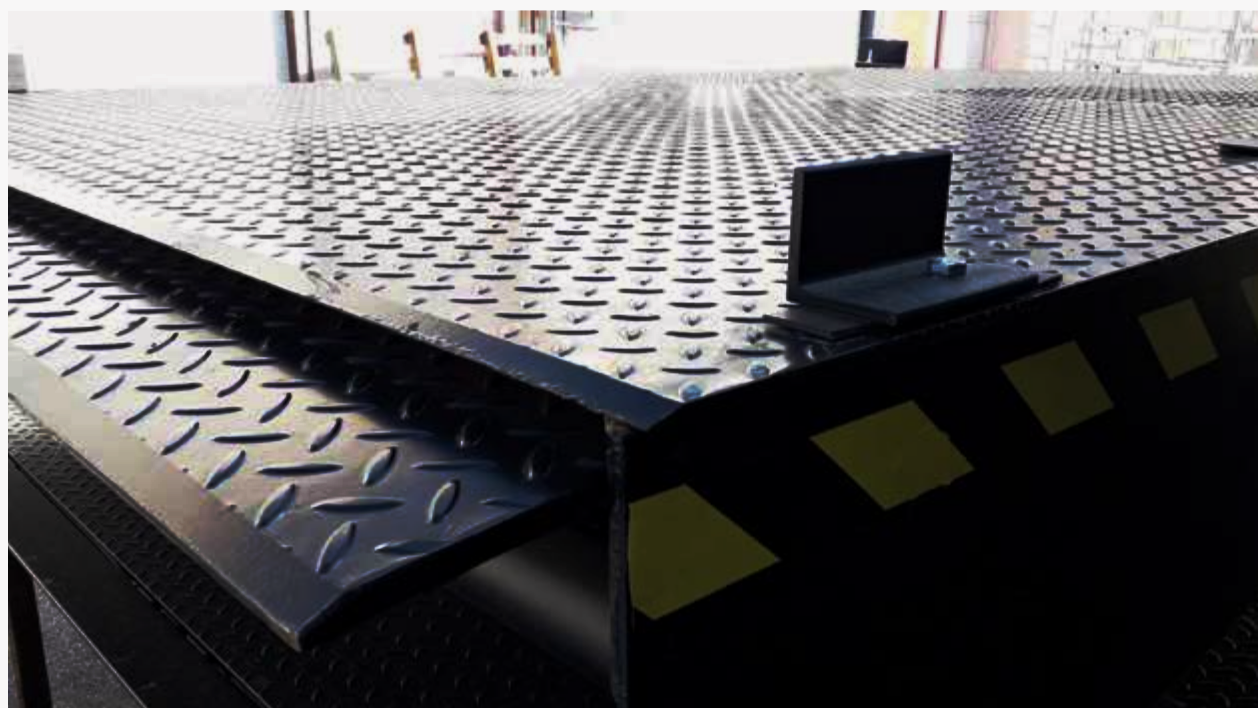
- dock leveller with different dimensions and load capacities,
- 500 mm long swing lip,
- additional anti-slip layer on the driving surfaces of the leveller,
- structural elements of the leveller painted a selected RAL colour or hot-dip galvanised,
- the structure of the leveller and all hydraulic elements made of acid-resistant steel,
- non-standard shape of the swing lip,
- energy-absorbing, ordinary or reinforced bumpers in non-standard sizes,
- thermally insulated leveller,
- additional sealing for an opening of the vehicle's hydraulic plate.

# AMTRV-PRO

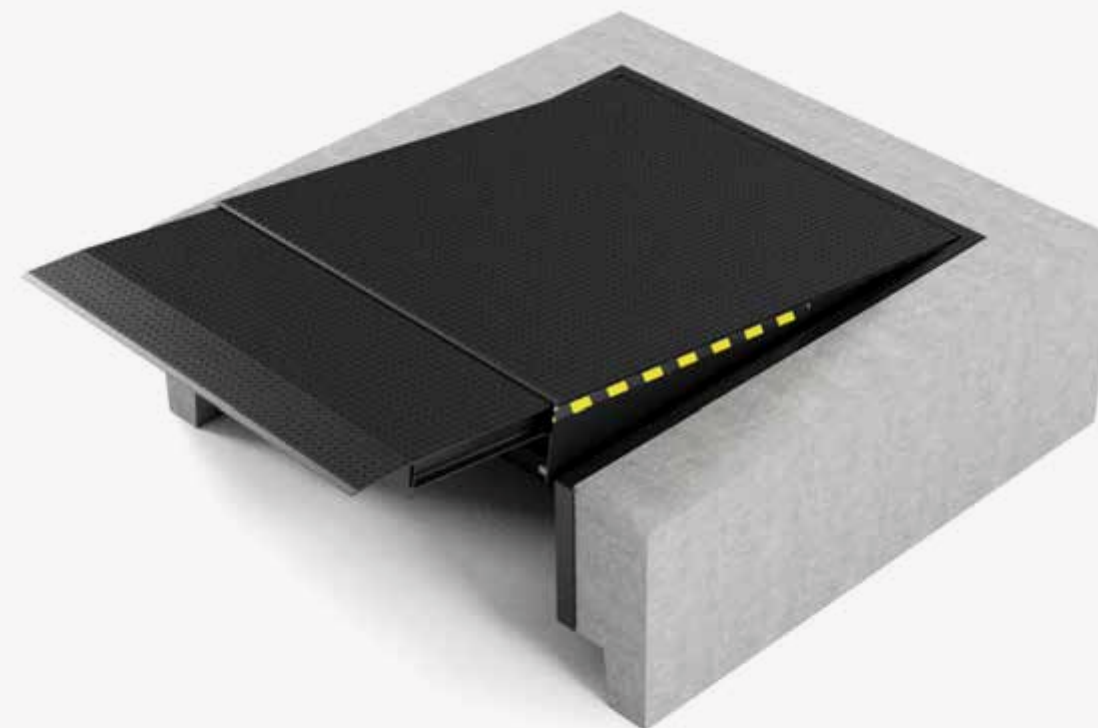
## Telescopic lip dock leveller

### Intended use

The telescopic lip dock leveller is designed for picking up pallets with a forklift to load or unload trucks. Its characteristic feature is a retractable lip guided along bearing rollers. The leveller has the CE mark. Its platform is made of 8/10 mm thick ribbed sheet metal. It is integrated with the service support and connected to the back of the leveller frame with hinges. Fully secure use is ensured by the anti-slip surface, foot protection along the entire length of the platform and the full lifting range of the leveller. Different methods of placing bridges in the foundation are possible.



### Telescopic lip dock leveller



### Standard technical parameters\*

<b>Application</b>	Nominal	Loading systems
<b>Lengths</b>	Nominal	2000, 2500, 3000, 3500, 4000 mm
<b>Widths</b>	Structure	2000, 2250 mm
<b>Heights</b>		710 mm
<b>Nominal lengths of the telescopic lip</b>		500 mm, (optional 1000 mm)
<b>Sheet metal thickness</b>		8-10 mm (depending on the load capacity)
<b>Nominal load capacity</b>		6-12 tonnes (60-120 kN)
<b>Working ranges above the level</b>		0 to 430 mm
<b>Working ranges below the level</b>		0 to -260 mm
<b>Standard colours:</b>		RAL 9005 RAL 7042 RAL 5010 (two-component resin-based paint)

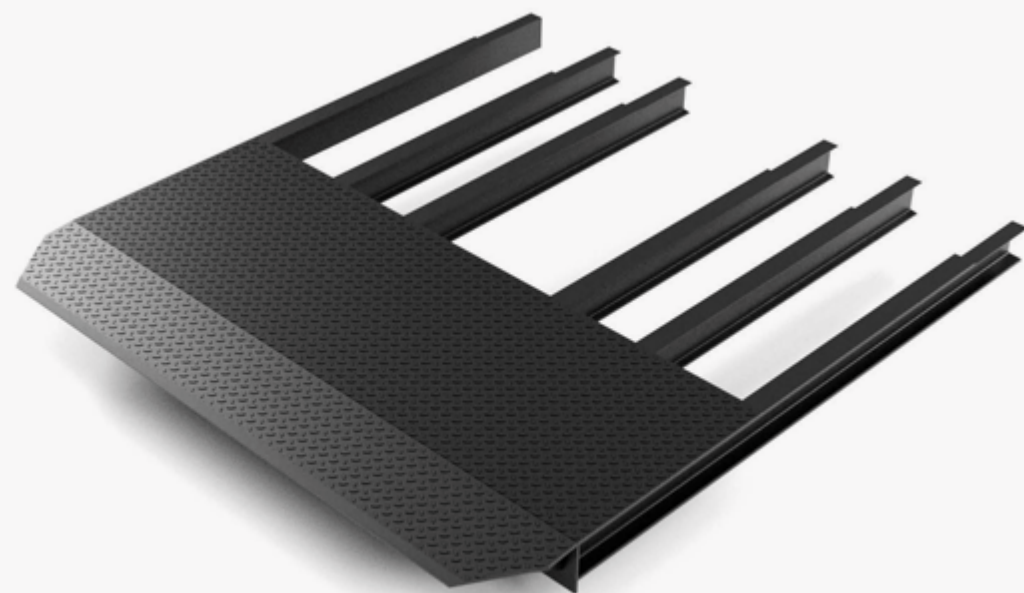
\*Can be adapted according to the customer's requirements

## Types of telescopic lips

The AMTRV-PRO leveller lip is made of high quality 12 mm thick tread plate, equipped with a robust, reliable, maintenance-free telescopic mechanism. In addition, the lip has a 40 mm chamfer which prevents damage to the wheels of loading devices.

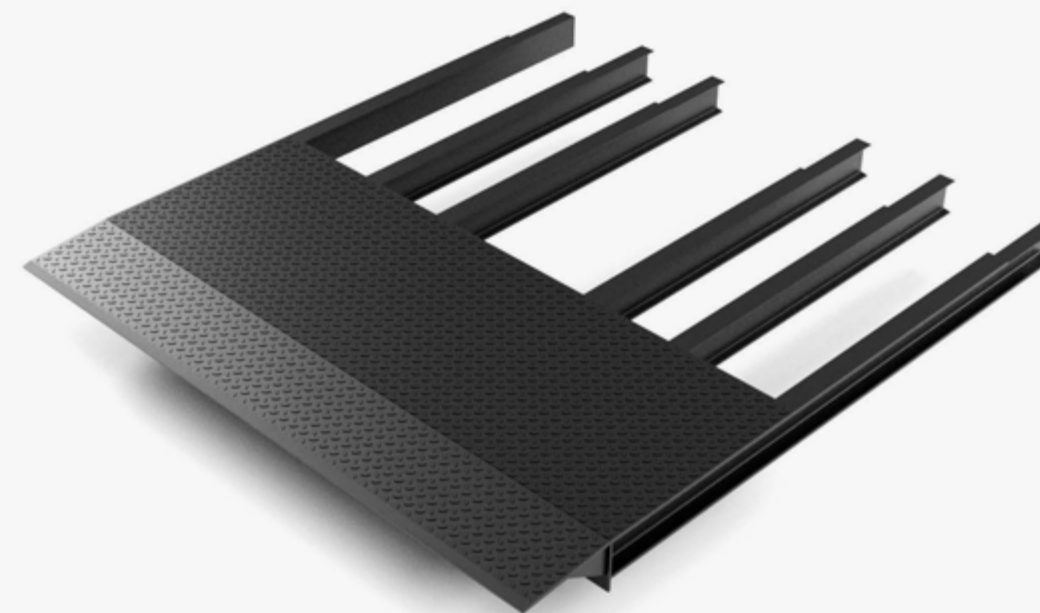
### Bevelled lip

The symmetrically cut lip facilitates loading and reduces the risk of damage to the docked vehicle.



### Straight lip

This standard version is designed for most types of loading with vehicles of the most common sizes.



## Characteristic features

- lip made of 12 mm tread plate,
- anti-slip properties,
- better traction of the forklift,
- ergonomic and safe loading.



## Control

- the drive system of the leveller is a hydraulic cylinder,
- the lip is lifted by a separate cylinder, powered separately by a hydraulic unit,
- closed hydraulic system (maximum pressure 22 bar),
- smooth adjustment to the vehicle height during loading,
- single-button control,
- protection in the event of a power failure or the use of an emergency switch, the leveller is protected against fall – it will stop and maintain the position it was in at the moment,
- the leveller control system can be coupled with the gate control system.

<b>Tank capacity</b>	6 dm <sup>3</sup>
<b>Working pressure</b>	140 bar
<b>Motor power</b>	1,5 kW
<b>Supply voltage</b>	230/400 VAC
<b>Control voltage</b>	24 V DC
<b>Protection type</b>	IP54
<b>Operating medium</b>	TELLUS T-15 or RANDO HDZ-15 mineral oil

## AMTR V-PRO auto control



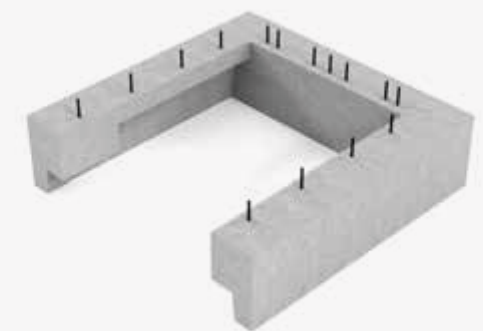
## Dock pan

The main function of the pan is to connect the leveller with the dock.  
The pan is directly filled with concrete.

### Dock standard



### Dock for the frame-formwork



## Standard equipment

- electrical installation
- hydraulic installation
- control box
- straight swing lip
- platform painted RAL 9005
- CE declaration of conformity

## Optional equipment

- dock leveller with different dimensions and load capacities,
- 500 mm long telescopic lip,
- additional anti-slip layer on the driving surfaces of the leveller,
- structural elements of the leveller painted a selected RAL colour or hot-dip galvanised,
- the structure of the leveller and all hydraulic elements made of acid-resistant steel,
- non-standard shape of the swing lip,
- energy-absorbing, ordinary or reinforced bumpers in non-standard sizes,
- thermally insulated leveller,
- additional sealing for an opening of the vehicle's hydraulic plate.